

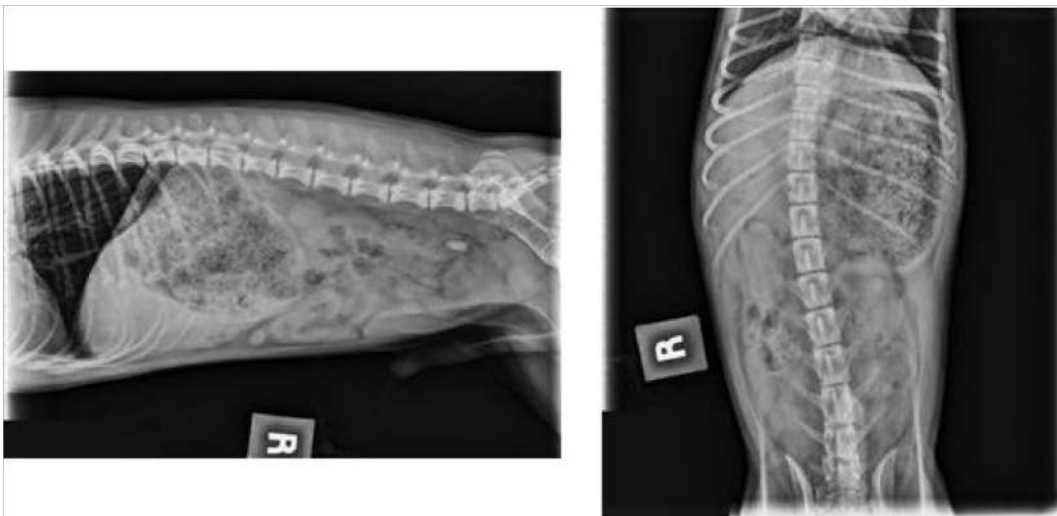
# It's A Sticky Situation

By Marni Cohen-Horowitz, DMV

Charley is a 5 month old female Labrador Retriever who presented to Route 516 Animal Hospital for having a decreased appetite, gagging, and vomiting for several days duration. Her physical exam was normal, except for a patch of glue dried to the left side of her nose. Abdominal xrays were taken which showed a large dilated stomach with opaque material. After discussing the xrays with the owners, it was determined that Charley got into a bottle of Gorilla Glue and ingested at least half of it.



Gorilla Glue is an extremely strong glue known for its industrial holding power. It easily bonds to metal, stone, wood, glass, ceramic, foam, and more. Therefore, it is found in many households. It has a sweet smell and taste, making it very attractive for dogs to ingest. After being exposed to moisture, the product is able to expand to many times its original volume, forming a hard foam-like foreign body, generally in the stomach. This causes an obstruction of the stomach which requires emergency surgery.



Charley was taken to surgery where a large soft-ball sized cast of gorilla glue was removed from her stomach. The rest of her exploratory surgery was normal. She went home the next day and recovered without any incidence.

Remember to keep your Gorilla Glue in a sturdy toolbox on an elevated shelf so your pets cannot get to them. Clean up any spills promptly and don't allow your pets to be around

you when you are working with these materials. Most importantly, help increase awareness of this by telling your friends and other pet lovers the harmful effects of these substances.

**For a cool video on how gorilla glue reacts in the stomach, watch this link:**

**<https://youtu.be/a75AZ3DPKbE>**